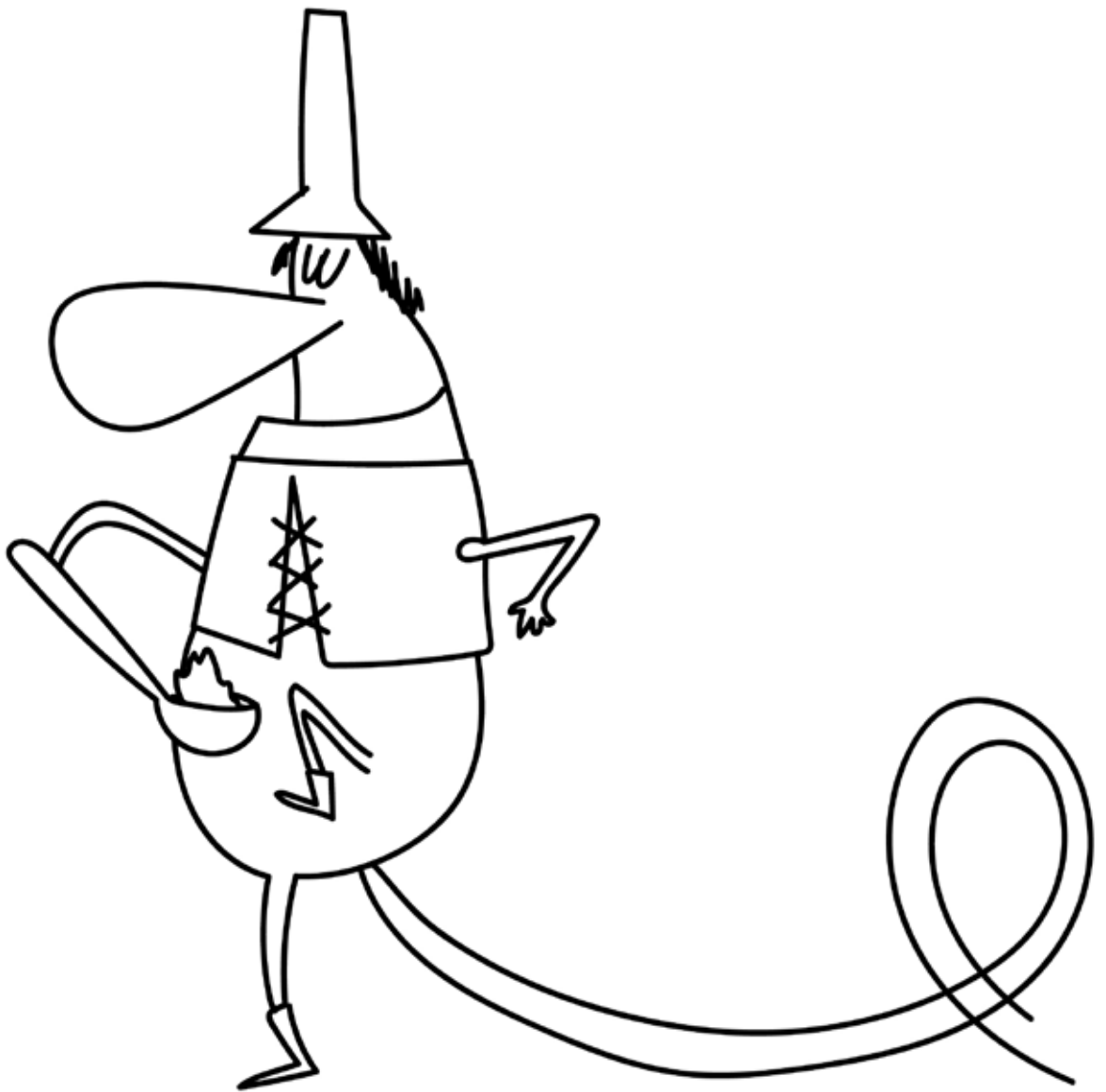
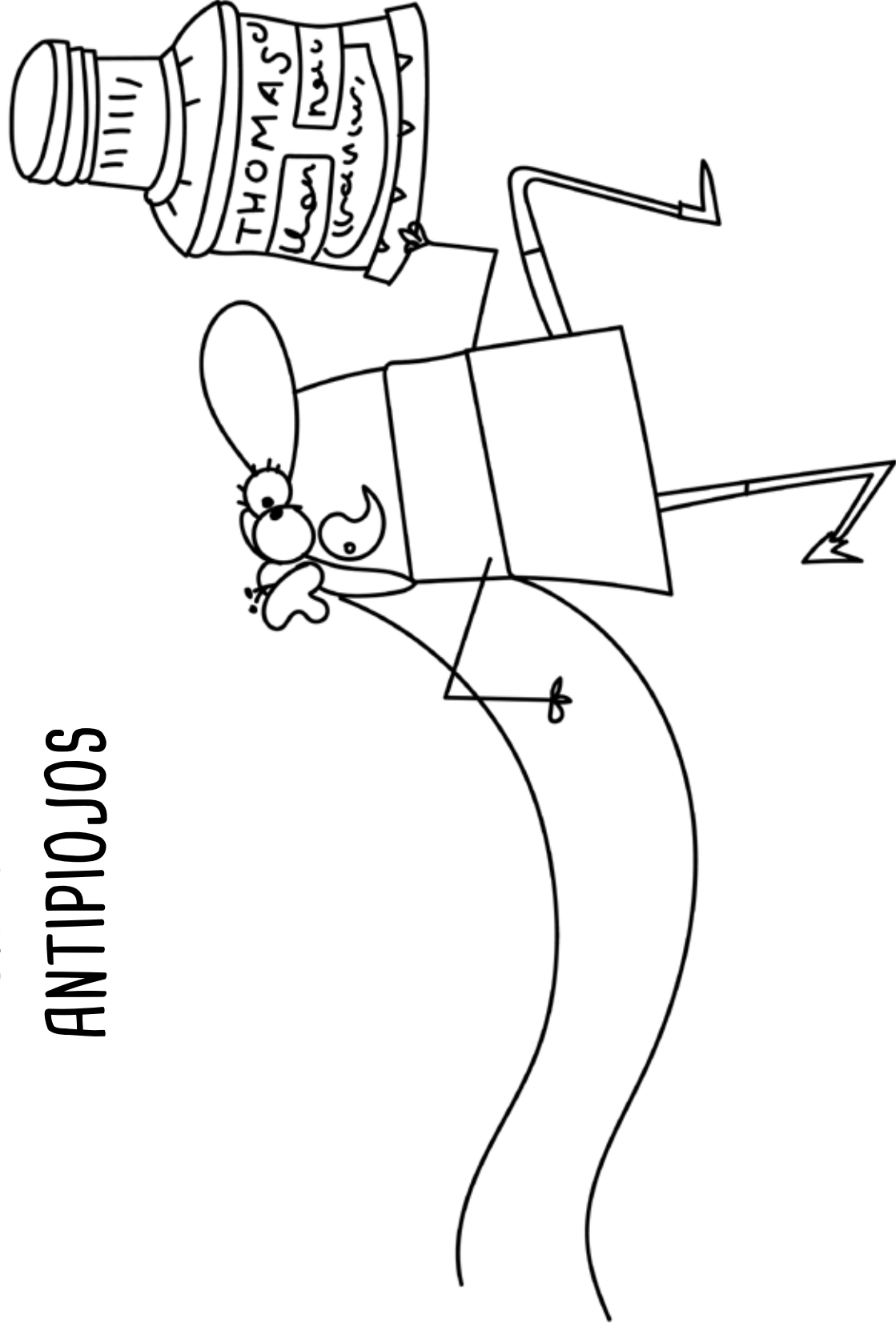


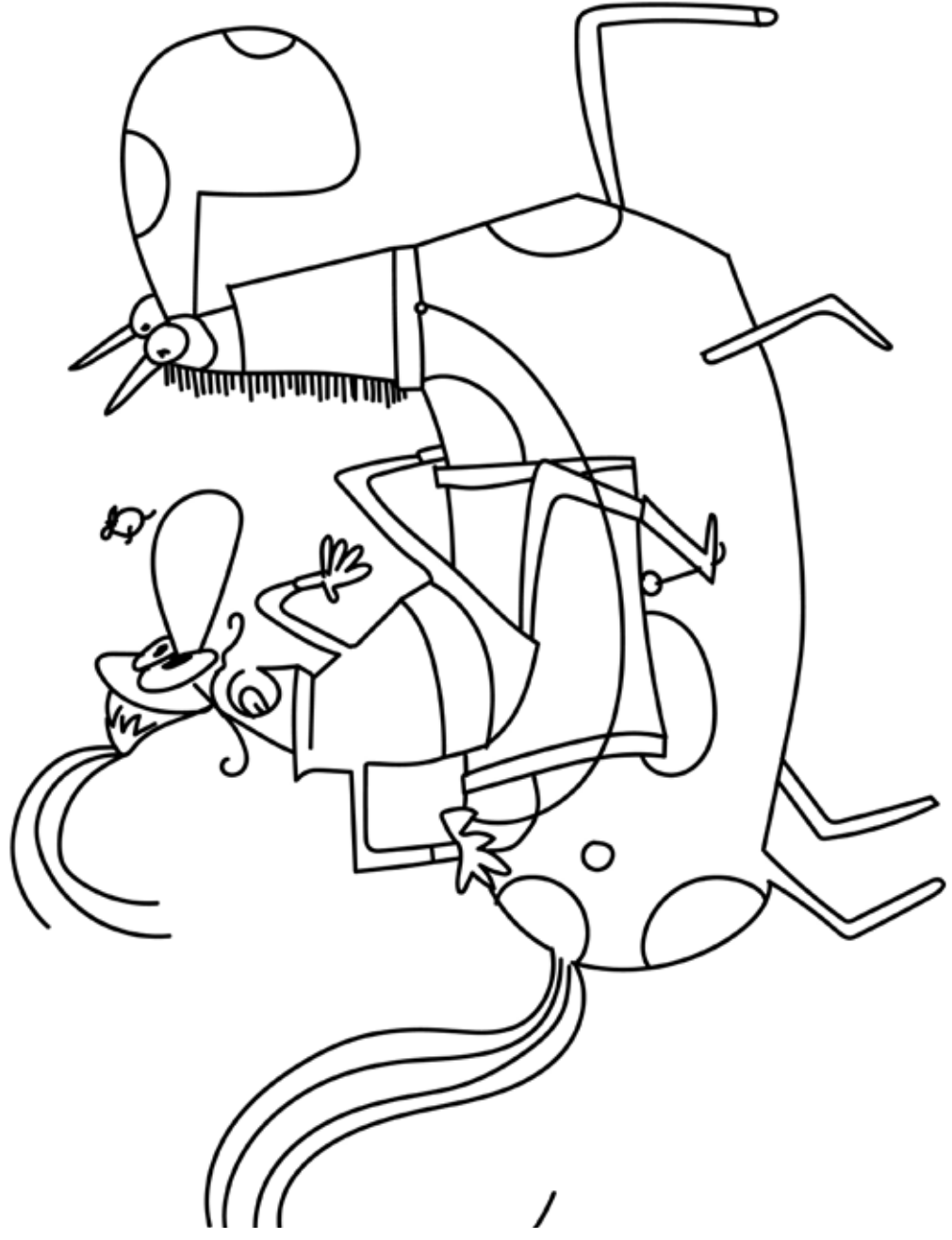
# SANCHO PANZA



# CHAMPÚ ANTIPIOJOS

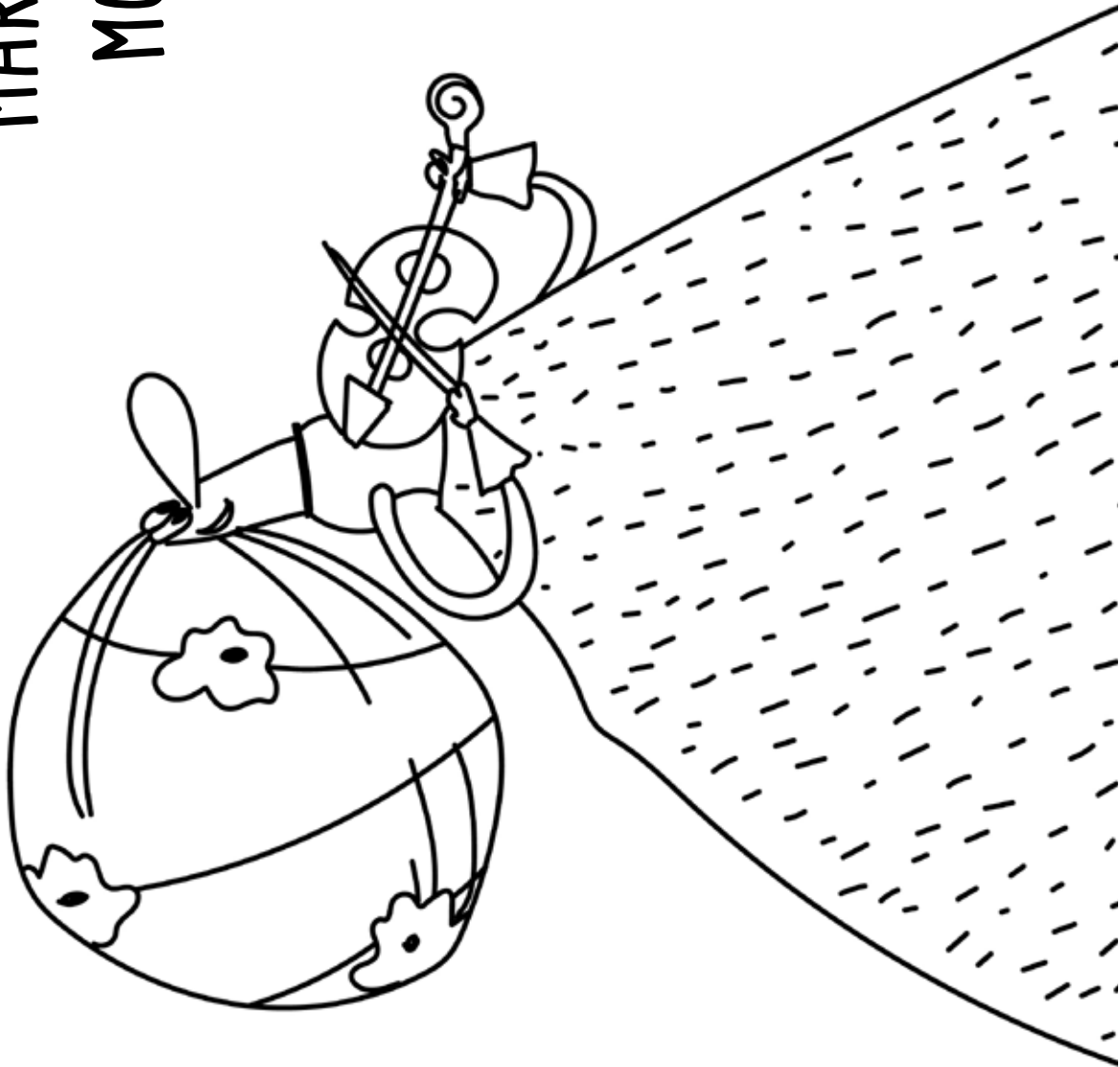


# DON QUIJOTE DE LA MANCHA



MARIA ANNA

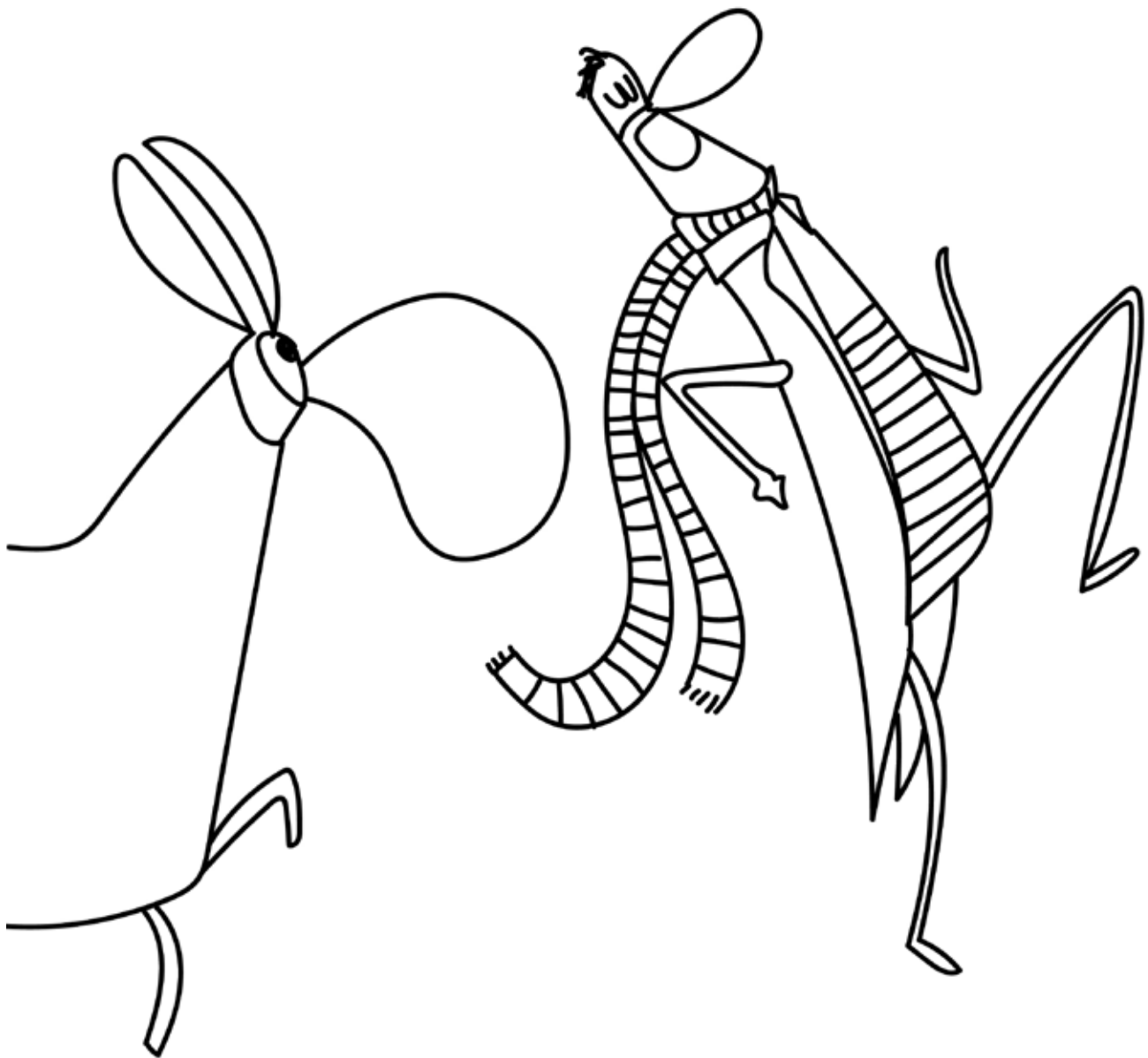
MOZART



# LEONARDO DA VINCI

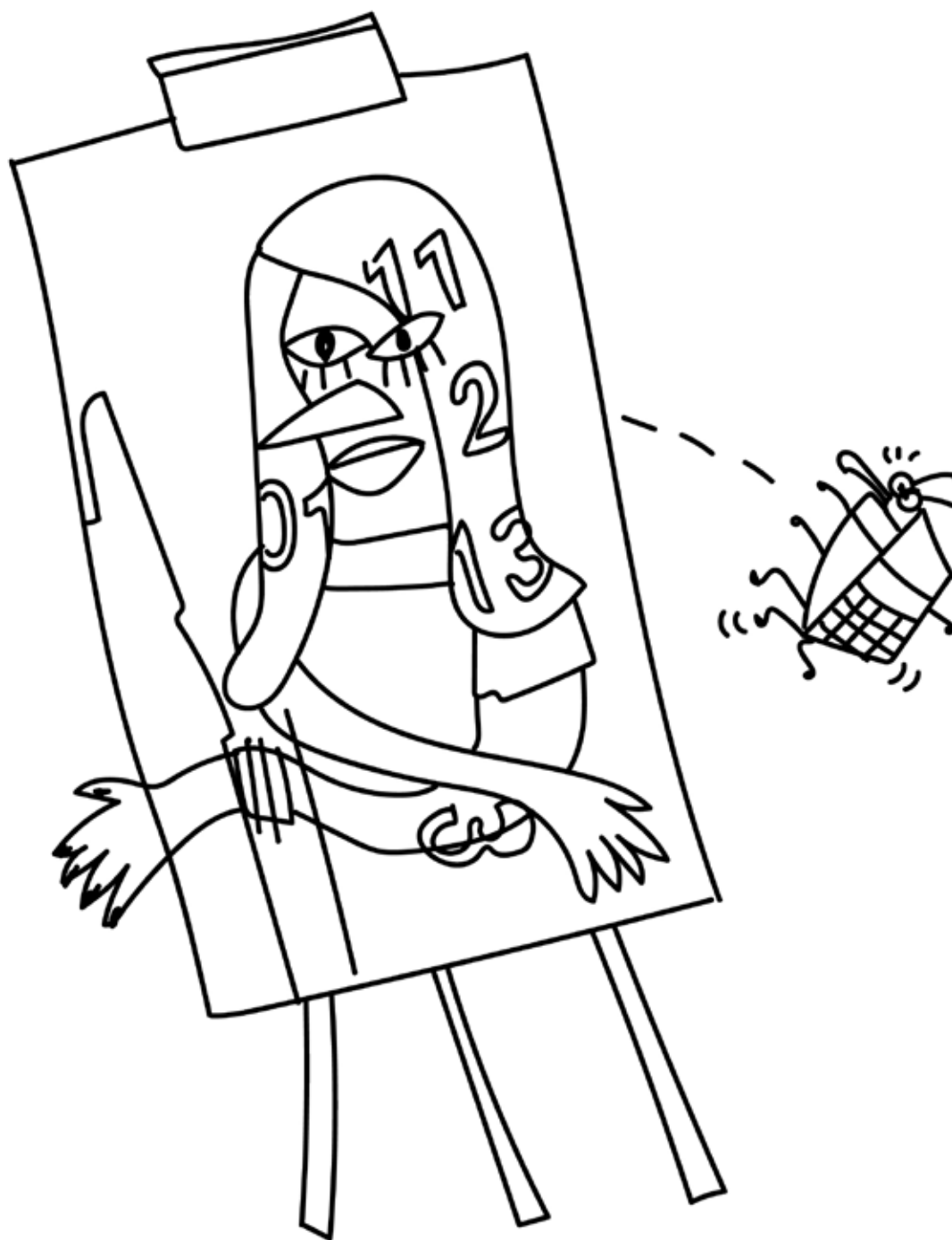


JUAN RAMÓN JIMÉNEZ  
PASEA CON PLATERO



# LA MONA LISA

## OBRA DE LEONARDO DA VINCI



JUAN RAMÓN JIMÉNEZ  
PASEA CON PLATERO

